

Conversation Contents

Maps for the Call

Attachments:

/370. Maps for the Call/1.1 BearsEars_BriefingMap_031716.pdf
/370. Maps for the Call/1.2 BearsEars_BriefingMap_3Boundaries.pdf
/370. Maps for the Call/1.3 BearsEars_BriefingMap_BoundaryComparison_v2.pdf

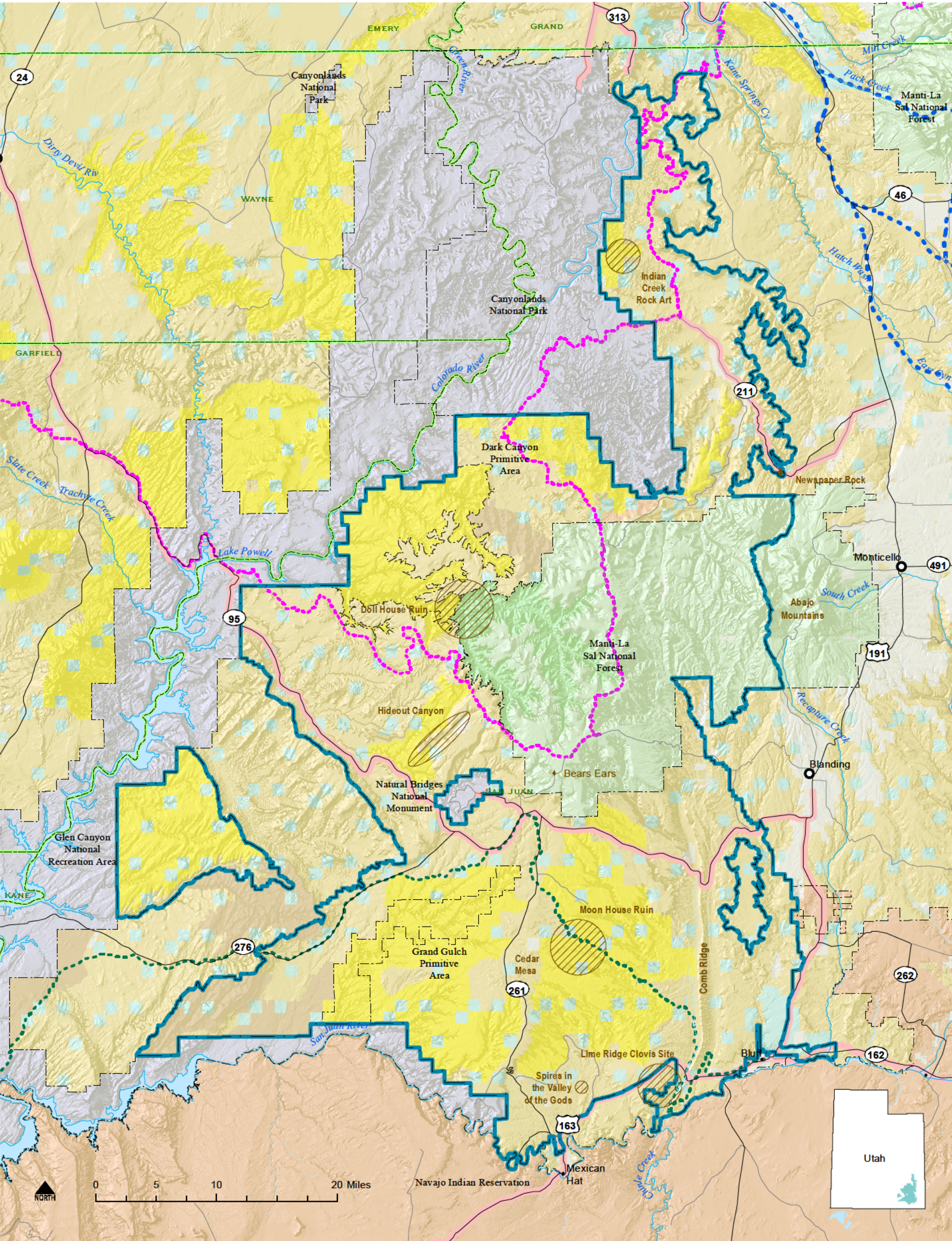
"Roberson, Edwin" <eroberso@blm.gov>

From: "Roberson, Edwin" <eroberso@blm.gov>
Sent: Mon Mar 13 2017 14:28:45 GMT-0600 (MDT)
To: Laura Brown <Laura.Brown@sol.doi.gov>, Kathleen Benedetto <kathleen_benedetto@ios.doi.gov>, "Magallanes, Downey" <downey_magallanes@ios.doi.gov>, "Hanson, Joshua" <joshua.hanson@sol.doi.gov>, "Moody, Aaron" <aaron.moody@sol.doi.gov>
Subject: Maps for the Call
Attachments: BearsEars_BriefingMap_031716.pdf
BearsEars_BriefingMap_3Boundaries.pdf
BearsEars_BriefingMap_BoundaryComparison_v2.pdf

--
Ed Roberson,
Utah BLM State Director
Office Phone: 801-539-4010
Cell Phone: 801-641-3846
Website: <https://www.blm.gov/utah>

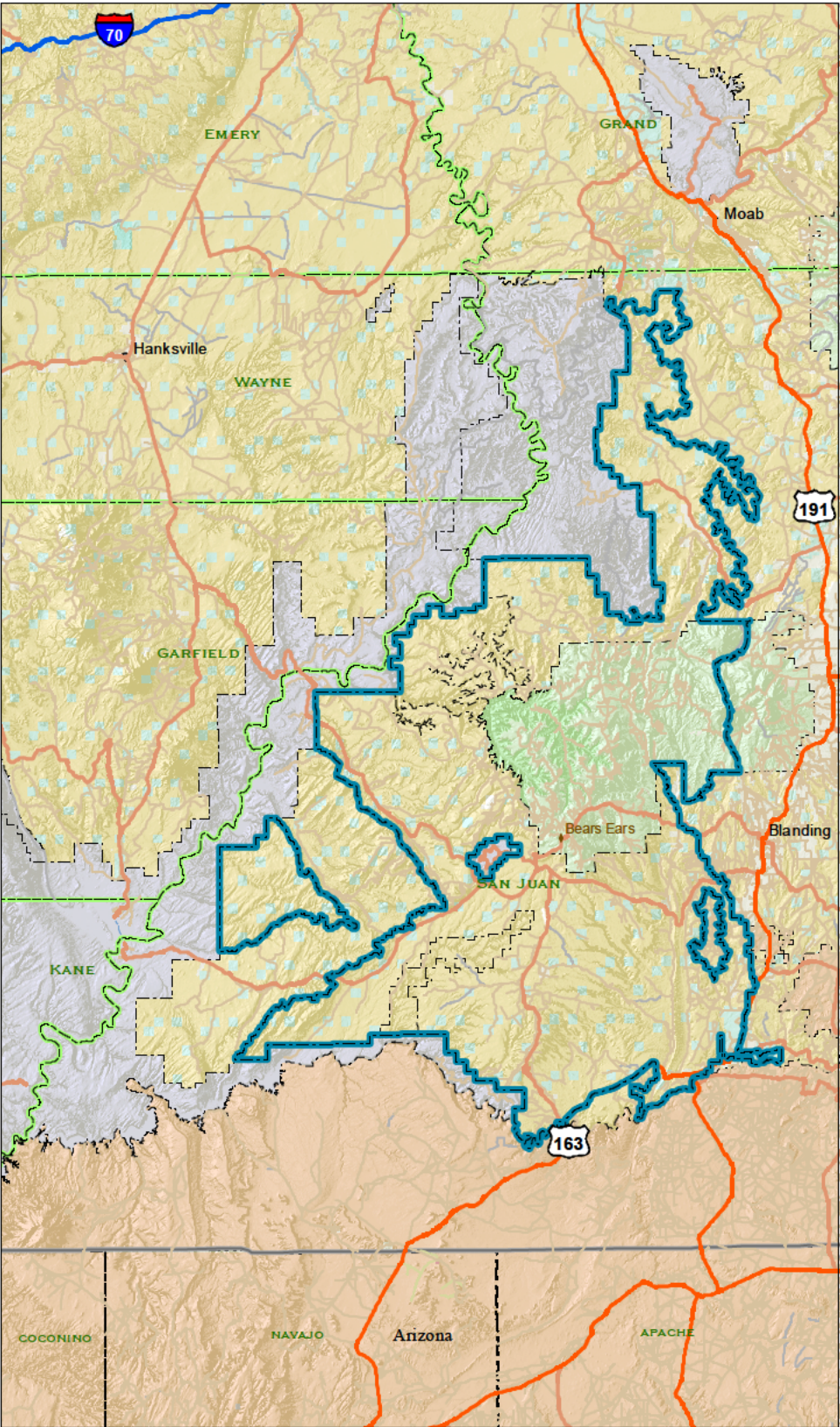
Bears Ears National Monument

March 3, 2017

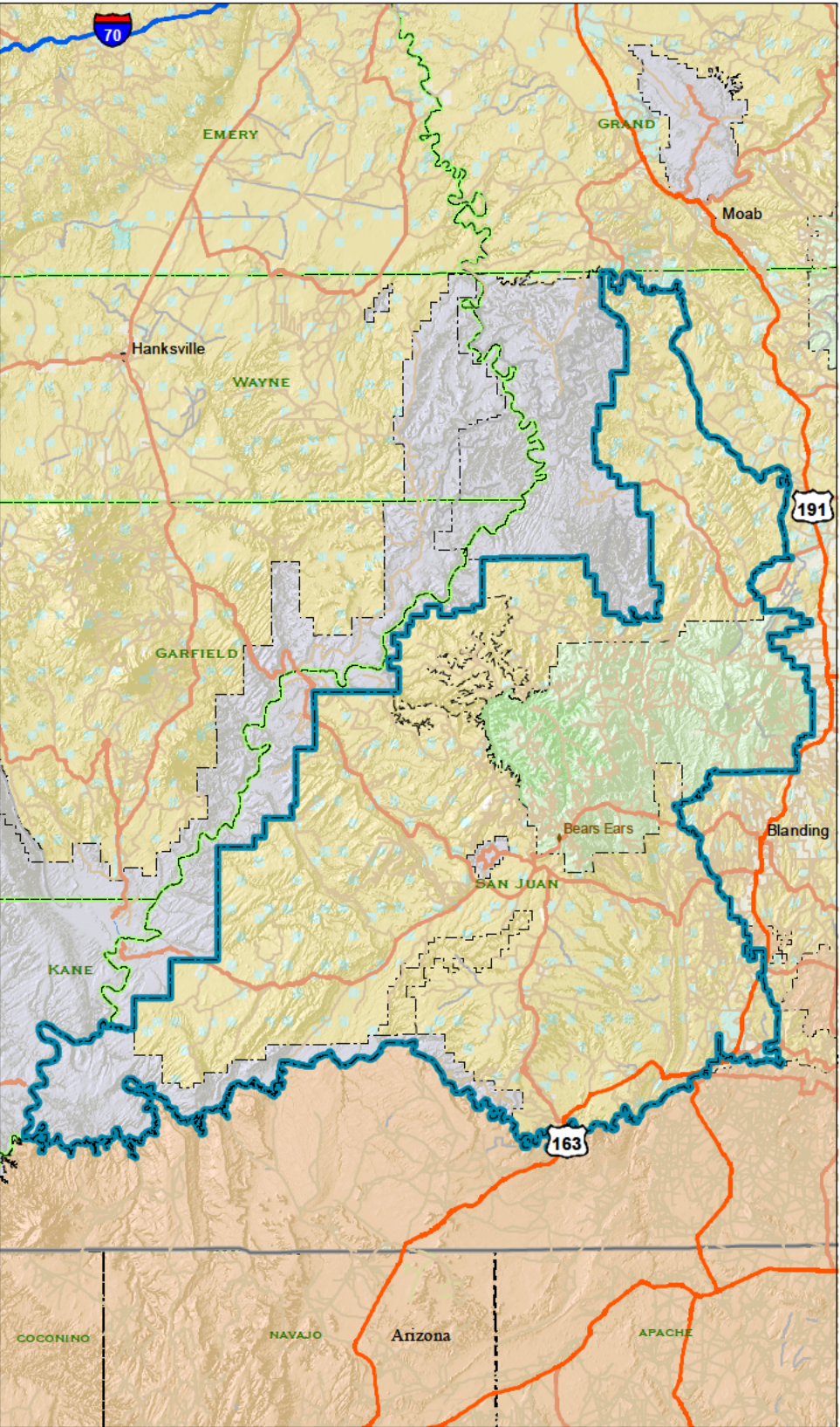


- | | | | |
|---------------------------------------|-------------------------------------|---------------------------|------------------------------|
| Bears Ears National Monument Boundary | Hole-in-the-Rock Trail | Bureau of Land Management | State Parks and Recreation |
| Cultural Areas | Old Spanish National Historic Trail | Indian Reservation | State Wildlife Management |
| BLM Natural Areas | Fremont Trail | National Park Service | US Forest Service |
| BLM Wilderness Study | Scenic Byway | Private Land | US Forest Service Wilderness |
| | American Discovery Trail | State Land | |

Bears Ears National Monument
Proclamated Boundary

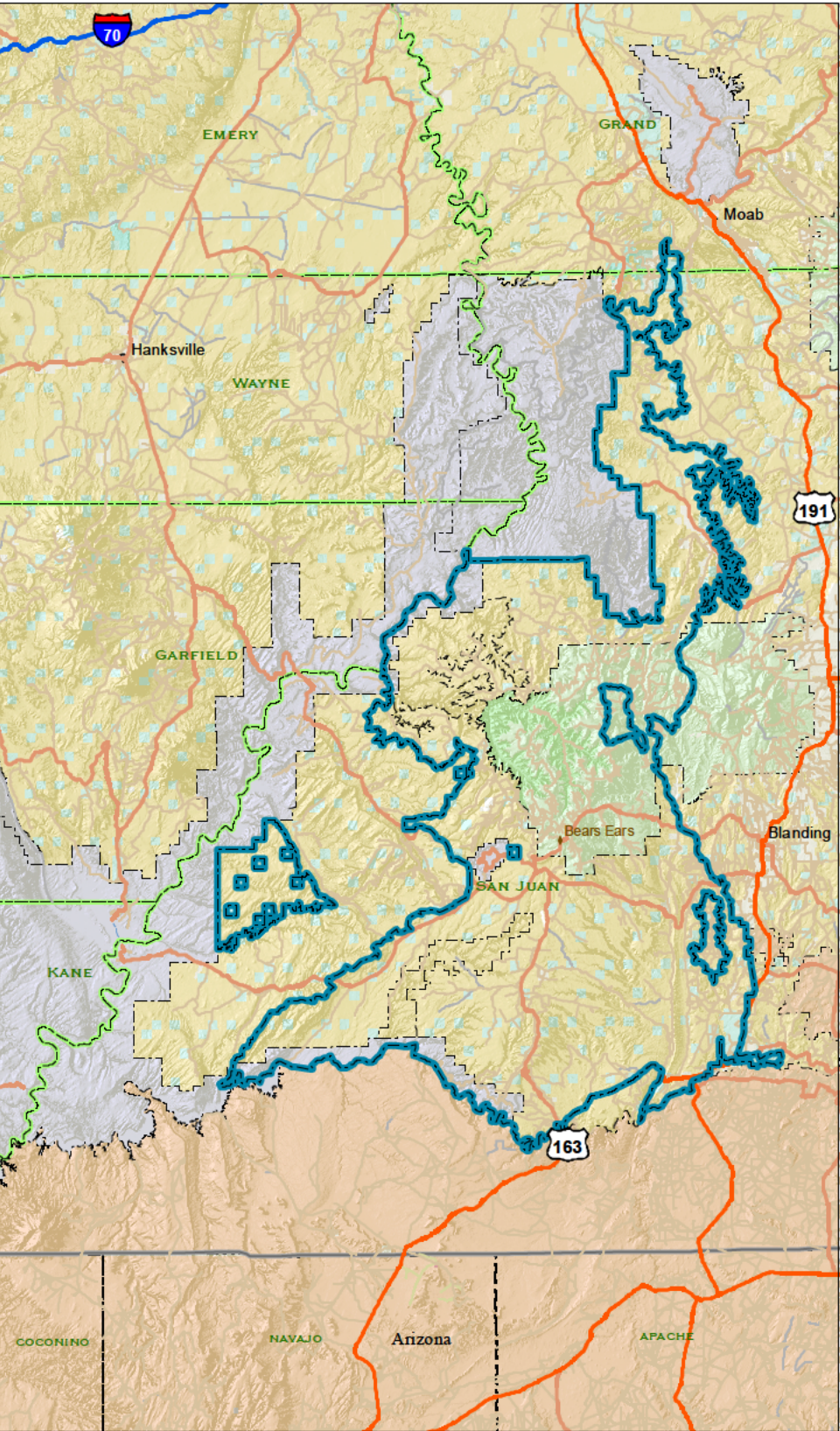


Bears Ears National Monument
Intertribal Coalition Boundary



Bears Ears National Monument
UPLI Boundary

March 13, 2017



Bears Ears National Monument Boundary

Bureau of Land Management

Indian Reservation

Military Reservations

National Park Service

Private Land

State Land

State Parks and Recreation

State Wildlife Management Area

US Fish & WildlifeNational Wildlife Refuge

US Forest Service

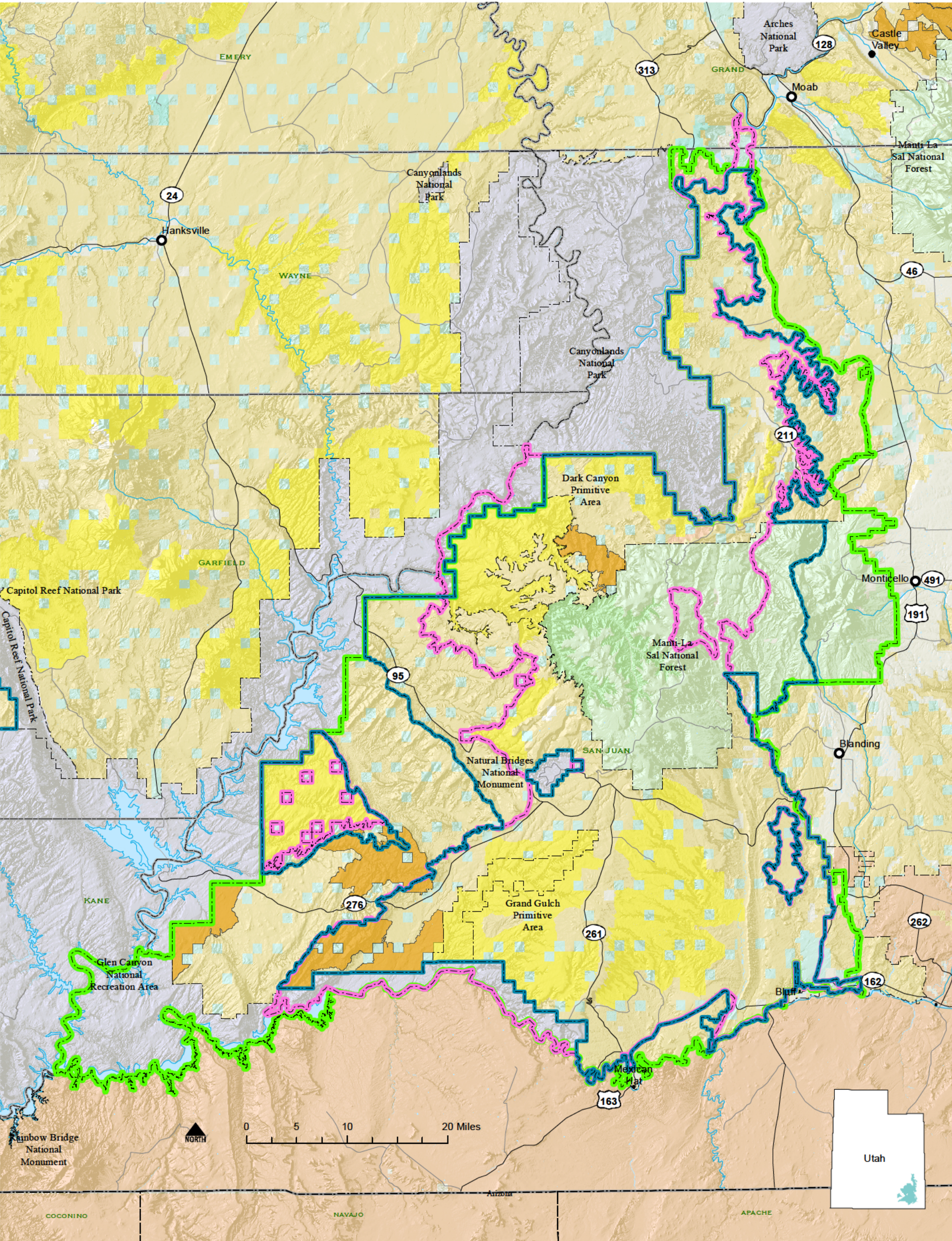
US Forest Service Wilderness Area

DOI-2019-04 00997

Bears Ears National Monument

Boundary Comparison

March 3, 2017



- | | | | |
|--|----------------------|---------------------------|------------------------------|
| Bears Ears National Monument Proclamation Boundary | BLM Natural Areas | Bureau of Land Management | State Parks and Recreation |
| UPLI Proposed Boundary | BLM Wilderness Study | Indian Reservation | State Wildlife Management |
| Intertribal Coalition Proposed Boundary | | National Park Service | US Forest Service |
| | | Private Land | US Forest Service Wilderness |
| | | State Land | |